

Installation guide

# Thermostatic expansion valve

## Type TCBE / TCCE / TCAE

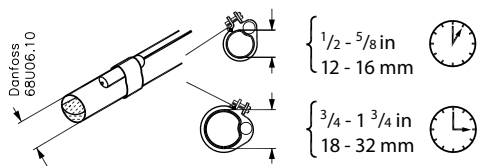
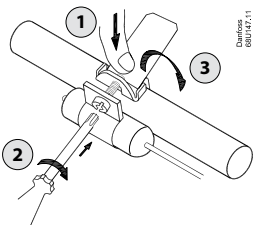
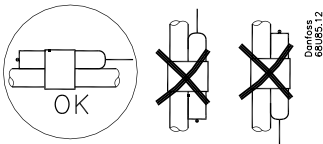
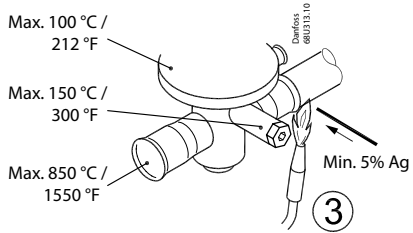
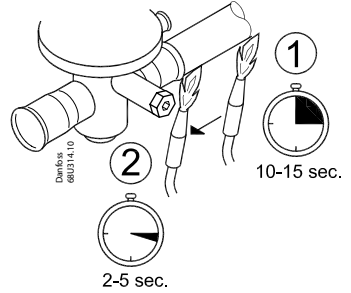
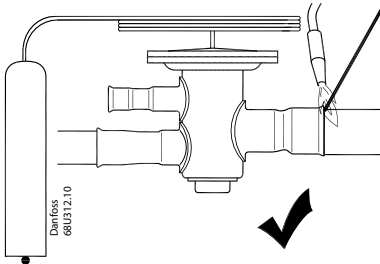
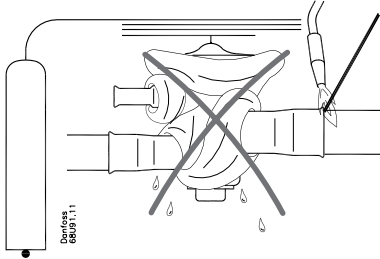
068R955Z

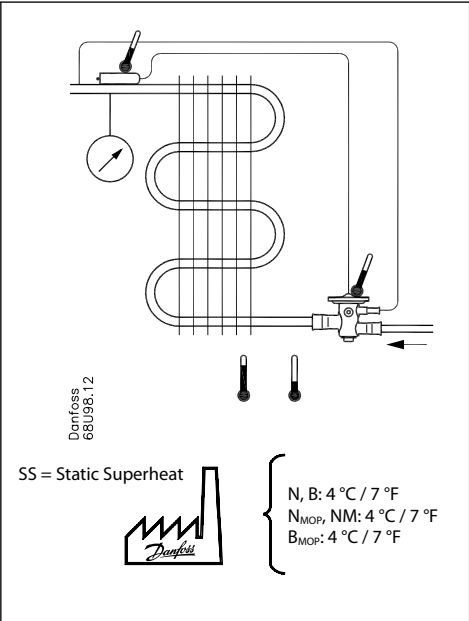
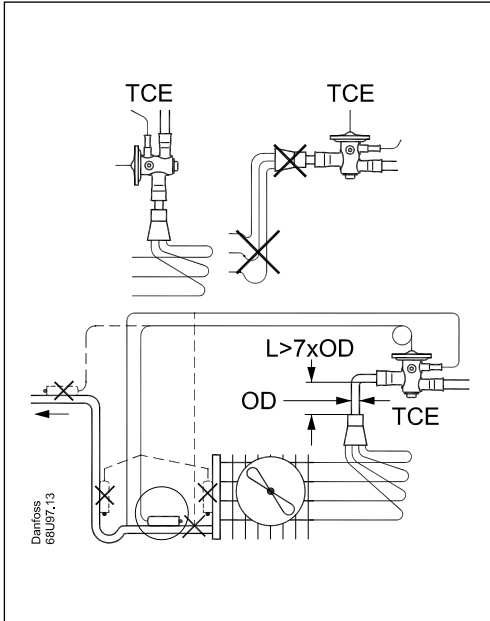
068R955Z

**Standard refrigerants:**  
See product label

**Max. working pressure:**  
PS / MWP: 45.5 bar / 660 psig

**Max. test pressure**  
P<sub>test</sub> = 45.5 bar / 660 psig





R22/R407C	R134a	R404A/R507	R410A	ΔSS 1 ×
-	N	-	-	1 °C (1.8°F)
N	NM	N,B	N,B	1.5 °C (2.7°F)
NM,B	-	NM	NM	2 °C (3.6°F)

**Temperature ranges:**  
 N = -40 - 10 °C / -40 - 60 °F  
 NM = -40 - -5 °C / -40 - 25 °F  
 B = -60 - -25 °C / -75 - -15 °F